

2019



Q7



**Nothing worthwhile was
achieved by thinking small.**



The Audi Q7 is our idea of thinking big. Engineered on the Audi principles of innovation, performance and design sophistication, the Q7 offers the full-size utility of three-row seating and cargo flexibility. With seating for seven, driver and passengers are treated to leather seating surfaces, intuitive ergonomics and advanced infotainment. Powerful engines and renowned quattro® all-wheel drive traction give you the motivation to make progress on a grand scale.

A wide powerband helps narrow the gap.



They won't say you lack ambition with the available 3.0-liter TFSI® engine in the Audi Q7. Supercharged air plays a leading role in helping the engine generate 329 hp and 325 lb-ft of torque for a 0-60 time of 5.7 seconds. Its high-power output also helps give the six-cylinder Q7 a class-leading towing capacity of 7,700 pounds.¹ And with standard quattro® all-wheel drive, that power is put to good use.

2019 Audi Q7 Prestige shown in Samurai Gray metallic with available equipment.

¹ Maximum tow rating when properly equipped with towing accessories. Vehicle load, other accessories and options may reduce maximum towing capacity. See vehicle Owner's Manual for details.



Torque is what helps you move from a stop, which is why the 2.0-liter TFSI® four-cylinder engine features a quick-spooling turbocharger that helps it create 248 hp and 273 lb-ft of torque through a wide RPM range. A four-valve, DOHC design and Audi valvelift system help optimize airflow into the combustion chambers, and two intercoolers help to reduce the temperature of the air it breathes. Working in tandem with an eight-speed Tiptronic® transmission, the Audi Q7 with its four-cylinder engine can turn a gap into a position up-front.

2019 Audi Q7 Premium Plus shown in Galaxy Blue metallic with available equipment.

Luxury is having room to spare.



In addition to standard quattro® all-wheel drive and seating for seven, the Audi Q7 Premium is equipped with a host of other standard features to help you make the most out of all the room. Comfort comes easy from leather seating surfaces, with the driver and front passenger treated to heated eight-way power-adjustable seats. And a panoramic sunroof with tilt, slide and power sunshade that can open up new vistas. Standard MMI® Navigation plus is there to guide your way, and Audi smartphone interface can help you stay connected to your contacts, messages and music.³ In the Q7, luxury takes on new dimensions.

2019 Audi Q7 Premium shown in Samurai Gray metallic with available equipment.



2019 Audi Q7 Premium shown with Nougat Brown leather and available equipment.

³ See Interior Inlays page for important information regarding MMI® Navigation plus.

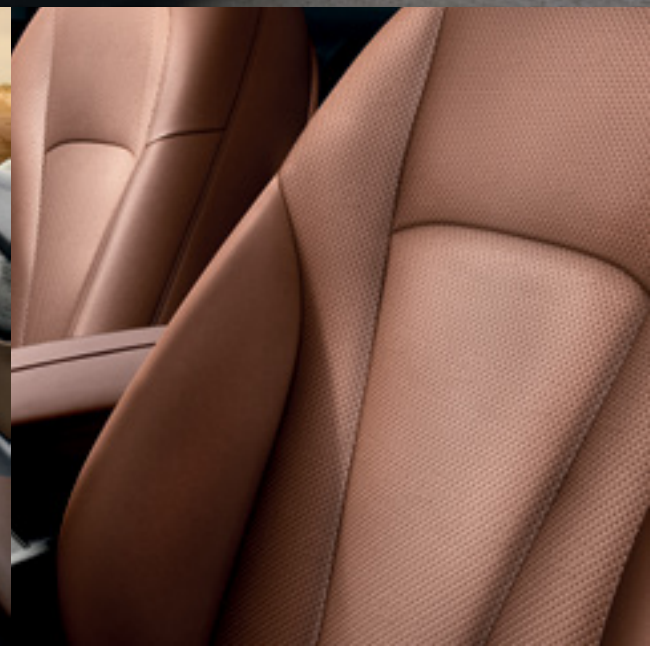


Stature is as much psychological as it is physical.



The muscular design lines give the Audi Q7 a full-size presence. And its rigid chassis of aluminum and high-strength steel impart a feeling of substance. In the Audi Q7 Premium Plus, the list of standard features becomes more substantial. They include full LED headlights, the innovative Audi virtual cockpit digital display and the expanded fidelity of the BOSE® 3D Surround Sound System. It won't take long for you to realize that it's not just the elevated ride height that makes you feel like you're standing tall.

2019 Audi Q7 Premium Plus shown in Samurai Gray metallic with Nougat Brown leather and available equipment.



Take a stand on your convictions from the seat of progress.

The Audi Q7 Prestige appeals to those who desire a higher level of features, from additional driver assistance systems such as Audi adaptive cruise control with Traffic Jam assist to a head-up display relaying speed and navigation information.¹ The interior is trimmed with Gray Oak wood lower inlays for natural texture, while the Ambient LED interior lighting plus package allows you to color the environment to suit your mood. As the trim with the most standard features, it's easy to see you believe in more.

2019 Audi Q7 Prestige shown with available Rock Gray Valcona leather and optional equipment.

¹ Driver Assistance features are not substitutes for attentive driving. Please see your Owner's Manual for further details and important limitations.



**Black may be the absence
of light, but it's always
abundant in style.**

2019 Audi Q7 Prestige shown in Samurai Gray metallic with available Titanium-black optic package and available equipment.

The style conscious choose black when they want to make an impression. By finishing the Singleframe® grille, exterior window trim and door sideblade in a covert shade of black, and topped off with roof rails in matte black, the Audi Q7 Prestige with the Titanium-black optic package looks ready to go undercover. The 21" Audi Sport® 5-spoke-blade design wheels are finished in high-gloss black. With the Titanium-black optic package, your attempts to maintain a low profile won't go unnoticed.





A



Audi smartphone interface supported by Apple CarPlay® shown with an 8.3-inch MMI® center infotainment/navigation display.¹

B



C



D



F



G



H

A. Available Ambient LED interior lighting plus package | Functional, reactive and beautiful lighting illuminates the cabin.

B. Audi smartphone interface | Access your compatible Apple® and Android™ devices along with select applications.¹

C. Available four-zone automatic climate control

D. Available Audi virtual cockpit | Intuitive, immersive, available intelligence is within your sight line.

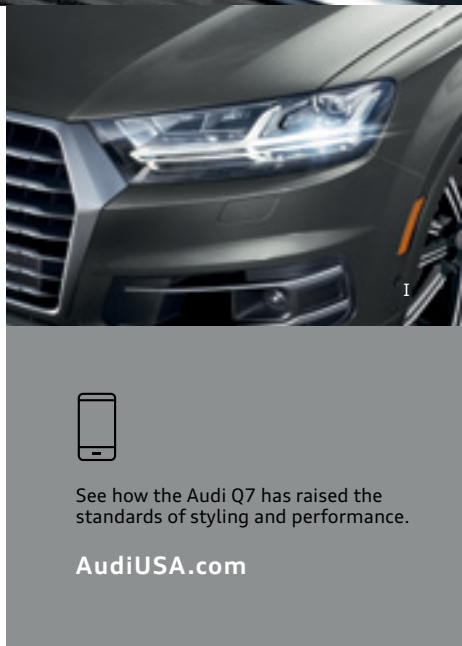
E. Three-zone automatic climate control | Keep your passengers cozy.

F. MMI® all-in-touch with handwriting-recognition technology.²

G. Available Bang & Olufsen® 3D Advanced Sound System | Provides a vivid entertainment experience.

H. Yacht-style throttle gear selector | Rest your wrist naturally while engaging the MMI® all-in-touch system while in park.^{2,14}

I. Available full LED headlights | Form a distinctive look that provides long-lasting illumination.



I



See how the Audi Q7 has raised the standards of styling and performance.

AudiUSA.com

1, 2, 14 See Interior Inlays page for important information regarding: Audi smartphone interface, MMI® all-in-touch with handwriting-recognition technology and yacht-style throttle gear selector.

Active lifestyles require thoughtful gear selection. Get through life's adventures by equipping your Audi vehicle in style with Audi Genuine Accessories. Create lasting memories while making bold personal statements using accessories to make an Audi truly yours, because being true to yourself never goes out of style.

Make a few additions to your memories.



A. Compact cargo carrier¹

Extra gear doesn't have to take up valuable cargo space with our aerodynamic carrier that offers a generous 10.5-cu-ft capacity. Size: 76.8" long, 26.4" wide, 15.7" high.



B. Thule® SUP Taxi¹

This premier locking stand-up paddleboard (SUP) carrier helps secure your paddleboard or surfboard on your way to the water, with a convenient universal mounting design. Accommodates boards up to 34" wide and includes heavy-duty, steel-reinforced webbing and a spring-loaded locking cam to secure your boards during transportation.

C. Canoe/kayak rack¹

This easy-to-install rack system makes getting to your next water-going adventure smooth sailing. Holds one kayak or canoe up to 100 lbs and includes one pair of locking, heavy-duty straps.



Audi Genuine Accessories



A



B



C

Audi Genuine Sport and Design Accessories

For a bolder appearance or a finishing touch, we have a solution that helps make every mile more enjoyable—and more yours.

- ▶ Stylish wheel designs
- ▶ License plate frames

Audi TravelSpace Transport Accessories

When you're on the go, help make sure what you want to carry fits with a variety of intelligent and innovative solutions.

- ▶ Bike and ski racks³
- ▶ Rooftop cargo carriers³
- ▶ In-vehicle cargo bags

¹ Proper installation required. Professional installation may be recommended. See owner's literature and dealer for details. ² When driving during cold, snowy or icy weather conditions, ensure that your vehicle is equipped with appropriate all-season or winter weather tires. Even with appropriate tires, you must always drive in a manner appropriate for the weather, visibility and road conditions. Tires are supplied and warranted by their manufacturer. ³ Proper installation required. See dealer for details. All roof rack system attachments require the base carrier bars. All accessories sold separately. ⁴ Not available in all states. Check with your authorized Audi dealer for product availability.

Audi Guard Comfort and Protection Accessories

Help protect what you love. Use Audi Guard Comfort and Protection Accessories to help keep your Audi looking like new—inside and out.

- ▶ Floor mats¹
- ▶ First aid kit
- ▶ Cargo mats

Audi Guard Car Care Products

Your Audi deserves the very best, and this is it: the only car care line designed specifically for Audi vehicles.

- ▶ Leather care⁴
- ▶ Detailing tools⁴
- ▶ Winter protection⁴

Audi collection



Your pride is our passion.

D

A. All-weather floor mats¹

The all-weather floor mats feature a nubbed design that helps protect your vehicle's floor and carpeting from the elements. Black mats are available in sets of two for front or rear. Front mats feature the Q7 logo.

B. 19" Audi Q7 winter wheel and tire package^{1,2}

Adding style and performance, this winter wheel and tire package features Audi Original winter tires designed to help improve traction and handling in a variety of winter weather conditions. See your authorized Audi dealer for details.

C. 21" 10-arm cast-aluminum Talea wheels

Enhance the dynamic appearance of your Audi with matte black, machine-polished, cast-aluminum alloy wheels in this ten-spoke design.

D. Ladies' scoopneck T-shirt

This polyester/cotton/rayon-blended tee features a semi-fitted silhouette, a seamed collar and double-needle sleeves that make it feel like it was tailored for you. Soft and lightweight, it looks great on its own or part of a combination.

E. Sport duffel bag

Made with Jacquard and polyester, this duffel is big enough for your essentials and your extras. Two large side pockets can help you keep it all organized. White trim and the Audi rings logo highlight its stylish design.

F. Audi active wear

For you, the fun begins when you break a sweat. The Audi collection of active wear is designed to keep you warm when it's chilly, dry when it rains, or help shade your eyes on sunny days. Available in several styles and colors, these active life items are made to put in the extra miles.



E



F

Visit audi.us/accessories for more.

Visit audi.us/collection for more.

Q7 Featured Highlights | Packages and Options

Premium

- > 18" 5-arm design wheels with 255/60 all-season tires (Q7 45 TFSI® (2.0T) quattro®)
- > 19" 5-V-spoke design wheels with 255/55 all-season tires (Q7 55 TFSI® (3.0T) quattro®)
- > Xenon plus headlights with LED daytime running lights
- > LED taillights
- > Rear fog lights
- > Power-adjustable, power-folding, heated exterior side mirrors with memory
- > Integrated twin-trapezoidal exhaust outlets
- > Three-spoke multifunction steering wheel with shift paddles
- > Power tilt and telescopic adjustable steering column with memory
- > Heated eight-way power front seats and four-way power lumbar adjustment for driver
- > Three-zone automatic climate control
- > Power 50/50 split-folding third row
- > Leather seating surfaces
- > Auto-dimming interior rear view mirror with digital compass
- > Panoramic sunroof with tilt, slide and power sunshade features
- > Power windows with one-touch up/down operation and power retention until front door is opened
- > Audi smartphone interface including Apple CarPlay® and Google™ Android Auto™¹
- > 8.3" MMI® center infotainment/navigation display
- > MMI® all-in-touch with handwriting-recognition technology²
- > Audi sound system with ten speakers and single CD player with MP3 playback capability
- > MMI® Navigation plus with voice control system³
- > Audi connect® CARE with limited-time subscription⁴
- > Audi connect® PRIME and Audi connect® PLUS online services with six-month trial subscription^{5,6}
- > BLUETOOTH® streaming audio for compatible devices
- > Audi advanced key—keyless start, stop and entry with hands-free tailgate release, open/close⁷
- > Parking system plus⁸ (front and rear acoustic sensors)
- > Audi pre sense® basic⁹
- > Audi pre sense® front⁹
- > Rear view camera⁹

Premium Plus, includes Premium features in addition to:

- > Full LED headlights
- > Auto-dimming exterior side mirrors
- > Ambient LED interior lighting package
- > Audi virtual cockpit (12.3" LCD fully digital instrument cluster with two visual modes: Classic and Infotainment)
- > Audi phone box⁹ (signal booster and wireless charger)
- > BOSE® 3D Surround Sound System with 19 speakers, BOSE® Advanced Staging Technology, 15-channel amplifier and 558 watts
- > Audi side assist and Audi pre sense® rear⁹
 - with Rear cross traffic assist⁹
 - with Vehicle exit warning⁹
- > Top view camera system⁹

Prestige, includes Premium Plus features in addition to:

- > 20" 10-spoke-star design wheels with gray/polished finish and 285/45 all-season tires¹⁰
- > Four-zone automatic climate control with diffuser vent
- > Aluminum-optic diffuser vent trim
- > Power soft-closing doors
- > Ventilated twelve-way power front seats including four-way lumbar adjustment
- > Second-row side and tailgate window sunshades
- > Ambient LED interior lighting plus package
- > Head-up display with navigation and assistance systems information^{3,8}
- > Audi adaptive cruise control
 - with Traffic Jam assist⁸
 - with Turn assist⁸
 - with Collision avoidance assist⁸
- > Audi active lane assist⁸
- > Traffic sign recognition⁸
- > High-beam assistant⁸
- > Park steering assist⁸

| Premium | Premium Plus | Prestige | Available packages |
|---------|--------------|----------|--|
| □ | ■ | ■ | Convenience package <ul style="list-style-type: none"> > Audi side assist and Audi pre sense® rear⁹ <ul style="list-style-type: none"> - with Rear cross traffic assist⁹ - with Vehicle exit warning⁹ > Audi phone box⁹ (signal booster and wireless charger) > Auto-dimming exterior side mirrors |
| □ | □ | □ | Cold Weather package <ul style="list-style-type: none"> > All-weather floor mats (black rubber mats with Q7 logo, set of 4) > Heated three-spoke multifunction steering wheel with shift paddles > Heated rear seats |
| — | □ | ■ | Warm Weather package <ul style="list-style-type: none"> > Four-zone automatic climate control with diffuser vent > Aluminum-optic diffuser vent trim > Ventilated twelve-way power front seats including four-way power lumbar adjustment > Second-row side and tailgate window sunshades |
| — | □ | ■ | Driver Assistance package <ul style="list-style-type: none"> > Audi adaptive cruise control <ul style="list-style-type: none"> - with Traffic Jam assist⁸ - with Turn assist⁸ - with Collision avoidance assist⁸ > Audi active lane assist⁸ > Traffic sign recognition⁸ > High-beam assistant⁸ > Park steering assist⁸ |
| — | — | □ | Luxury package <ul style="list-style-type: none"> > Heated and ventilated 18-way power individual contour comfort front seats, including four-way power lumbar adjustment > Massage function for front seats > Valcona leather seats > Front passenger seat memory > Extended leather package—Fine Nappa leather door armrests, lower door panels, handle pulls and center console > Alcantara® headliner |

| Premium | Premium Plus | Prestige | Available packages |
|---------|--------------|----------|--|
| — | — | □ | Adaptive Chassis package <ul style="list-style-type: none"> > Audi adaptive air suspension with self-leveling, vehicle speed and driving style automatic control logic as well as driver-selectable ride height levels > All-wheel steering with vehicle speed-dependent control |
| — | — | □ | Titanium-black optic package <ul style="list-style-type: none"> > 21" Audi Sport® 5-spoke-blade design wheels with high-gloss black finish and 285/40 all-season tires¹⁰ > Titanium-black Singleframe® grille, trim around exterior side windows and door side blade > Matte black roof rails > Black exhaust tips |

| Premium | Premium Plus | Prestige | Stand-alone options |
|---------|--------------|----------|---|
| — | — | □ | > Bang & Olufsen® 3D Advanced Sound System with 23 speakers, 23-channel BeoCore amplifier with ICEpower® technology and 1,920 watts |
| — | — | □ | > Night vision assistant with pedestrian and large animal detection ⁸ |
| □ | □ | □ | > Rear-passenger thorax side airbags ¹¹ |
| □ | □ | □ | > Black cloth headliner |
| — | — | □ | > Black Alcantara® headliner |
| □ | □ | — | > Gray Oak Wood lower inlays (Q7 45 TFSI®) |
| □ | □ | □ | > Terra Brown Walnut Wood lower inlays (Q7 55 TFSI®) |
| □ | □ | — | > 19" 255/55 all-season run-flat tires (Q7 55 TFSI®) |
| □ | □ | — | > 20" 285/45 all-season run-flat tires ¹⁰ (Q7 55 TFSI®) |
| □ | □ | — | > 19" 5-V-spoke design wheels with 255/55 all-season run-flat tires (Q7 45 TFSI®) |
| □ | □ | — | > 20" 10-spoke-star design wheels with gray/polished finish and 285/45 all-season tires ¹⁰ |
| — | — | □ | > 21" Audi Sport® 5-spoke-blade design wheels with 285/40 all-season tires ¹⁰ |
| — | — | □ | > 22" Audi Sport® 5-V-spoke-star design wheels, titanium finish with 285/35 summer performance tires ¹² |
| □ | □ | □ | > Towing package with 4,400 lb (Q7 45 TFSI®)/7,700 lb (Q7 55 TFSI®) towing capacity ¹³ |
| □ | □ | □ | > Running boards |

1–13 See Interior Inlays page for important information regarding: Audi smartphone, MMI® touch, MMI® Navigation plus, Audi connect® CARE, Audi connect® PRIME, Audi connect® PLUS, Audi advanced key—keyless ignition, driver assistance features, Audi phone box, high-performance tires, airbags, summer performance tires and towing capacity.

■ Standard □ Optional — Not applicable

Technical Specifications

Engineering | Performance

| | Q7 45 TFSI® (2.0T) quattro® | Q7 55 TFSI® (3.0T) quattro® |
|--|--|--------------------------------|
| Engine type | Four-cylinder | Six-cylinder |
| Engine block/Cylinder head | Cast iron/Aluminum-alloy | Aluminum-alloy |
| Displacement (cc)/Bore and stroke (mm) | 1,984/82.5 x 92.8 | 2,995/84.5 x 89.0 |
| Horsepower (@ rpm) | 248 @ 5,000–6,000 | 329 @ 5,300–6,500 |
| Torque (lb-ft @ rpm) | 273 @ 1,600–4,500 | 325 @ 2,900–5,300 |
| Compression ratio | 9.6:1 | 10.8:1 |
| Valvetrain | 16-valve DOHC with Audi valvelift system | 24-valve DOHC |
| Induction/Fuel injection | Turbocharged/TFSI® | Supercharged/TFSI® |
| Start-stop engine system | ■ | ■ |
| Acceleration (0–60 mph) | 7.1 ¹ | 5.7 ¹ |
| Top track speed | 130 mph ² | 130 mph ² |

Transmission | Drivetrain

| | | |
|---|---|---|
| Eight-speed Tiptronic® automatic transmission with quattro® all-wheel drive | ■ | ■ |
|---|---|---|

Body | Suspension | Chassis

| | | |
|--|-----------|-----------|
| Lightweight construction technology—multi-material body construction | ■ | ■ |
| Five-link front independent steel spring suspension | ■ | ■ |
| Five-link rear independent steel spring suspension | ■ | ■ |
| Audi adaptive air suspension | — | □ |
| All-wheel steering | — | □ |
| Ventilated front disc/Ventilated rear disc brakes (in) | 14.8/13.8 | 14.8/13.8 |
| Electromechanical power steering system | ■ | ■ |
| Steering ratio | 15.8:1 | 15.8:1 |
| Turning circle, curb-to-curb (ft) | 40.7 | 40.7 |

Exterior measurements

| | | |
|------------------------------------|------------------------|------------------------|
| Wheelbase (in) | 117.9 | 117.9 |
| Length (in) | 199.6 | 199.6 |
| Height (in) | 68.5 | 68.5 |
| Overall width with mirrors (in) | 87.1 | 87.1 |
| Overall width without mirrors (in) | 77.5 | 77.5 |
| Track, front/rear (in) | 66.1/66.6 | 66.1/66.6 |
| Curb weight (lb) | 4,729 | 4,927 |
| Drag coefficient (Cw) | 0.34 | 0.34 |
| Maximum available towing capacity | 4,400 lbs ³ | 7,700 lbs ³ |

Interior measurements

| | | |
|---|----------------|----------------|
| Head room (in, front/middle/rear) | 39.9/38.8/35.9 | 39.9/38.8/35.9 |
| Leg room (in, front/middle/rear) | 41.7/38.8/29.2 | 41.7/38.8/29.2 |
| Shoulder room (in, front/middle/rear) | 59.5/58.5/49.4 | 59.5/58.5/49.4 |
| Cargo volume (cu ft, behind third row/behind second row/behind first row) | 14.2/35.7/69.6 | 14.2/35.7/69.6 |
| Seating capacity | 7 | 7 |

EPA mileage estimates | Capacities

| | | |
|--------------------------------------|-----------------------|-----------------------|
| Fuel economy (city/highway/combined) | 19/25/21 ⁴ | 19/25/21 ⁴ |
| Engine oil (qt) | 6.7 | 7.1 |
| Fuel (gal) | 22.5 ⁵ | 22.5 ⁵ |
| Recommended fuel | Premium | Premium |

■ Standard □ Optional — Not applicable NA Information not available at time of printing

¹ Always obey all speed and traffic laws. ² Top track speed is electronically limited in the U.S. Always obey all speed and traffic laws. ³ Maximum tow rating when properly equipped with towing accessories. Vehicle load, other accessories and options may reduce maximum towing capacity. See vehicle Owner's Manual for details. ⁴ 2019 EPA estimates. Your mileage will vary and depends on several factors, including your driving habits and vehicle condition. See www.fueleconomy.gov for details. ⁵ Never drive until the tank is completely empty. The irregular supply of fuel that results from that can cause engine misfires. Uncombusted fuel will then enter the exhaust system. This can cause overheating and damage to the catalytic converter.

Wheels

18" 5-arm design



Standard Q7 45 TFSI® (2.0T) quattro®

19" 5-V-spoke design



Optional Q7 45 TFSI® (2.0T) quattro®
Standard Q7 55 TFSI® (3.0T) quattro®

20" 10-spoke-star design, gray/polished finish



Optional Premium and Premium Plus
Standard Prestige

21" Audi Sport® 5-spoke-blade design



Optional Prestige

21" Audi Sport® 5-spoke-blade design,
high-gloss black finish



Titanium-black optic package

22" Audi Sport® 5-V-spoke-star design,
titanium finish



Optional Prestige

Exterior Colors

Carrara White



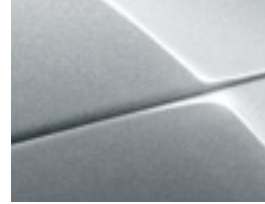
Night Black



Cobra Beige metallic



Florett Silver metallic



Galaxy Blue metallic



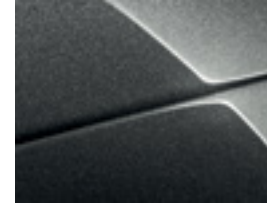
Glacier White metallic



Orca Black metallic



Samurai Gray metallic



Navarra Blue metallic¹



Interior Inlays

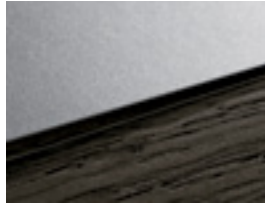


Diamond Silver/
Terra Brown Walnut wood



Q7 45 TFSI® (2.0T) quattro®
Standard

Diamond Silver/Gray Oak wood



Q7 45 TFSI® (2.0T) quattro®
Optional

High-gloss Black/Gray Oak wood



Q7 55 TFSI® (3.0T) quattro®
Standard

High-gloss Black/
Terra Brown Walnut wood



Q7 55 TFSI® (3.0T) quattro®
Optional

Aluminum/Brown Sycamore
Natural wood



Q7 Prestige Audi design selection—
Murillo Brown

Interior inlay and color options will vary based on model, trim level and package combination and may increase price. See your dealer for details. 1 Always pay careful attention to the road, and do not drive while distracted. Not all features available on all operating systems. Standard text and data usage rates apply. These features require compatible device, operating system and mobile apps. See mobile device and app providers for terms and privacy. "Android," "Android Auto," "Google Play" and other marks are trademarks of Google Inc. "Apple CarPlay" is a registered trademark of Apple Inc. 2 Always pay careful attention to the road, and do not drive while distracted. See Owner's Manual for further details and important limitations. 3 Audi Navigation plus depends on signals from the worldwide Global Positioning Satellite network. The vehicle's electrical system, and existing wireless and satellite technologies, must be available and operating properly for the system to function. The system is designed to provide you with suggested routes in locating addresses, destinations and other points of interest. Changes in street names, construction zones, traffic flow, points of interest and other road system changes are beyond the control of Audi of America, Inc. Complete detailed mapping of lanes, roads, streets, toll roads, highways, etc., is not possible, therefore you may encounter discrepancies between the mapping and your actual location. Please rely on your individual judgment in determining whether or not to follow a suggested Audi Navigation plus route. 4 Always pay careful attention to the road, and do not drive while distracted. Connect CARE services are provided with the support of authorized affiliated and third-party service providers. Available on select models. Connect CARE services are activated prior to purchase or lease and do not require registration or paid subscription. Connect CARE services require vehicle cellular connectivity and availability of vehicle GPS signal; certain services collect location information. See Terms of Service for information about how to disable. Connect CARE services are subject to technologies remaining commercially available, and such service is not guaranteed and may not be available after December 2021. See Terms of Service, Privacy Policy and other details at www.audiusa.com/privacy and www.audiusa.com/technology/intelligence/audi-connect/connect-terms. Connect CARE services should be used only when it is safe and appropriate. 5 Always pay careful attention to the road, and do not drive while distracted. Connect PRIME services are optional, may require an additional subscription with separate terms and conditions, and should be used only when it is safe and appropriate. Trial or paid subscription required. Connect PRIME services require vehicle cellular connectivity and availability of vehicle GPS signal; certain services collect location information, see Terms of Service for information about how to disable. Online services are subject to change at any time. See Terms of Service, Privacy Policy and other details at www.audiusa.com/privacy and www.audiusa.com/technology/intelligence/audi-connect/connect-terms. 6 Always pay careful attention to the road, and do not drive while distracted. The Wi-Fi® hotspot feature is intended for passenger use only. 4G LTE coverage is not available in all areas. Wi-Fi® feature is provided through Connect PLUS. Connect PLUS features and technologies are optional, may require an additional subscription with separate terms and conditions, and should be used only when it is safe and appropriate. See materials provided by wireless carrier for terms, privacy, data security details. Returning devices connect automatically and use plan data unless hotspot is removed from device settings. 7 See Owner's Manual for further details and important warnings about the keyless ignition feature. Do not leave vehicle unattended with the engine running, particularly in enclosed spaces. 8 Driver Assistance features are not substitutes for attentive driving. Please see your Owner's Manual for further details and important limitations. 9 Requires compatible smart device. This is a CONSUMER device. BEFORE USE, you MUST REGISTER THIS DEVICE with your wireless provider and have your provider's consent. Most wireless providers consent to the use of signal boosters. Some providers may not consent to the use of this device on their network. If you are unsure, contact your provider. You MUST operate this device with approved antennas and cables as specified by the manufacture. Antennas MUST be installed at least 20 cm (8 inches) from any person. You MUST cease operating this device immediately if requested by the FCC or a licensed wireless service provider. WARNING. E911 location information may not be provided or may be inaccurate for calls serviced by using this device. 10 These tires may ride less comfortably, make more noise, and wear more quickly than other choices. To avoid tire, rim or vehicle damage, it is important that inflation pressure is regularly checked and maintained at optimum levels. Tires are supplied and warranted by their manufacturer. 11 Airbags are supplemental restraints only and will not deploy in all crash circumstances. Always use safety belts and seat children only in the rear, using restraint systems appropriate for their size and age. 12 These tires may ride less comfortably, make more noise, and wear more quickly than other choices. To avoid tire, rim or vehicle damage, it is important that inflation pressure is regularly checked and maintained at optimum levels. High-performance tires are designed for optimum performance and handling in warm climates and are not suitable for cold, snowy or icy weather conditions. When driving during cold, snowy or icy weather conditions, ensure that your vehicle is equipped with appropriate all-season or winter weather tires. Tires are supplied and warranted by their manufacturer. 13 Maximum tow rating when properly equipped with towing accessories. Vehicle load, other accessories and options may reduce maximum towing capacity. See vehicle Owner's Manual for details. 14 Before exiting the vehicle, always make sure the vehicle is shifted into Park, and the parking brake is set. See Owner's Manual for important details.

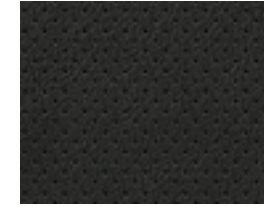
Interior Colors

Black leather



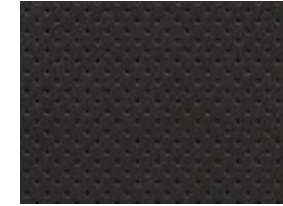
Standard seat

Black Perforated leather



Ventilated comfort seat

Black Perforated Valcona leather



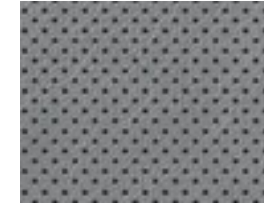
Individual contour seat

Rock Gray leather



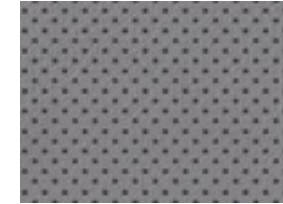
Standard seat

Rock Gray Perforated leather



Ventilated comfort seat

Rock Gray
Perforated Valcona leather



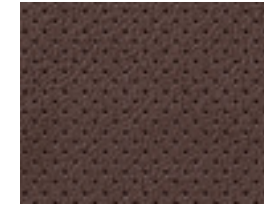
Individual contour seat

Nougat Brown leather



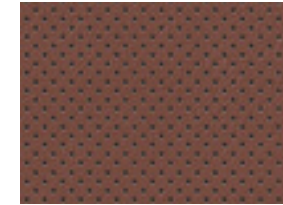
Standard seat

Nougat Brown Perforated leather



Ventilated comfort seat

Cedar Brown
Perforated Valcona leather



Individual contour seat

Murillo Brown
Perforated Valcona leather



Individual contour seat, Audi design
selection—Murillo Brown

Pistachio Beige leather



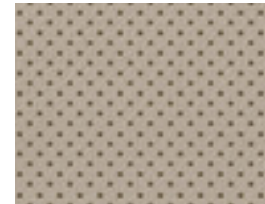
Standard seat

Pistachio Beige
Perforated leather



Ventilated comfort seat

Pistachio Beige
Perforated Valcona leather



Individual contour seat